

# APOLLOS INITIATIVE

*Daniel & Bethany Robbins  
investing long-term in the African Church  
through theological education  
and counseling training*

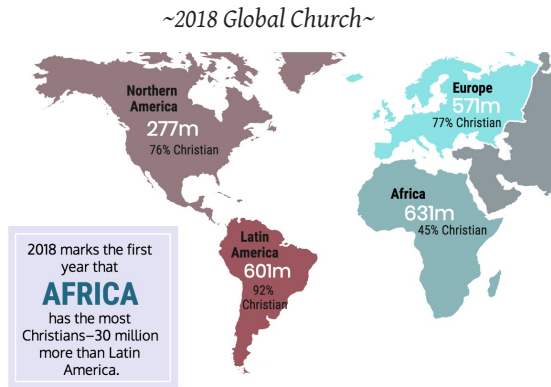
[apollosinitiative.org](http://apollosinitiative.org)

*Serge*

## TRAINING IS MOST SPARSE WHERE CHURCH GROWTH IS GREATEST

- Sub-Saharan Africa makes up roughly 25% of all Christianity. By 2050, the African church is expected to make up 40% of the global church.

- Most African pastors will never go to seminary.



- Many African pastors, with little or no formal education to support them, will lead congregations of over 1000 people.
- Only 20% of Africans who receive training in the West will return to minister in Africa. This 'Brain Drain,' costs a country its investment in its brightest leaders.

**OUR PLAN** With our children in tow, we plan to give our lives to equip and mature the Malawian Church, in partnership with Serge Missions. Through theological training for pastors and investing in the spiritual health of leaders and counselors, we will invest in gospel-health on the ground for generations to come.

**OUR STORY** Daniel & Bethany lived in Malawi from 2007-2009, teaching at a secondary school. Halfway through seminary, their growing family served in a summer-long internship at the Theological College of Zimbabwe in 2011. Since then, Bethany has mothered our 3 children, begun work as a Fellow with the Allender Center and is finishing her degree in Psychology from Bethel University. Daniel received an M.Div from Covenant Theological Seminary, served as Associate Pastor with the wonderful people of Christ Church Bellingham, and is finishing his Ph.D at the University of Aberdeen. It's been exciting to see the Lord weave our calling from these threads.

**WHY APOLLOS?** We want to continue his work. Apollos was the first inter-cultural theological educator, (Acts 18:24-28). Despite crossing two cultural barriers (being a Jewish immigrant from North Africa), he took the initiative to teach new Greek believers in Corinth. The Lord used him there to "greatly help" them. Just as Apollos was invested in by the Ephesian Church (18:26), he plied his learning for the good of the global church. We also will ply our competence and relationships for the good of the African Church.

## PHASE 1 & 2 | COMPLETE

With the hearty support received since our launch in 2018, Daniel and Bethany have both nearly finished degrees: Daniel, a Ph.D in New Testament and Systematic Theology, and Bethany, a BA in Psychology. We've also made two trips to Malawi, deepening and formalizing our relationships in Nkhoma, Malawi.

## PHASE 3 | LONG-TERM WORK

September 2021 (Lord Willing!) we will move to Malawi to begin our work with the Presbyterian Church of Central Africa (CCAP) and with a ministry called *When the Saints*.

*When the Saints* is a residential rehabilitation and therapy center for girls who have been sexually abused, located two hours north of Nkhoma. They receive referrals from the police, often more than their 75-bed capacity. Bethany will be joining the work already begun by:

- Partnering with a Malawian counselor to developing a training curriculum for new counselors
- Monthly visits to train new counselors, and build a network of therapists in Malawi

## Josophat Mwale Theological

*Institute (JMTI)* is the pastoral training seminary of the church-run Nkhoma University (NKHUNI). Every Presbyterian pastor for the CCAP's Nkhoma Synod is trained here. This makes it a strategic place to invest in gospel and theological renewal for the growing church in Malawi. Daniel will be joining the work already begun by:

- Lightening the class load of the current overworked faculty, thereby increasing the quality of in-class training.
- Discipling students 1:1
- Investing in fellow theology lecturers to develop the school and theological training infrastructure of Malawi.

## PHASE 4 | MUTUAL UPBUILDING

We want to see long-term partnerships between the PCA and the Nkhoma Synod. This could include:

sending lecturers, medical staff, construction foremen to Nkhoma

helping the CCAP gain financial independence of the Church of Scotland

receiving pastoral interns in the PNW

*we have yet to see the full benefits of partnering as one body with the global church*

## INVEST IN THE FUTURE OF THE GLOBAL CHURCH

Laying down our lives together for the Kingdom of Jesus Christ by establishing churches and transforming communities.

**Serge**  
Grace at the Fray

### *additional support needed: \$1500/month*

Housing costs are going down, but ministry costs are **way up**. \$1500 could be reached if:

4 Churches gave \$200/month

+

5 individuals gave \$100/month

+

4 individuals gave \$50/month

### STEPS TO PARTNER

1. Learn more on our website:  
[apollosinitiative.org](http://apollosinitiative.org)

2. Pray!

3. Meet with us to get to know each other, and share questions.

4. Click "Give & Join" on our website and follow links to give through Serge. Our giving ID: 51801

#### Connect with us!

Skype Ph: 206.809.0515

E: [dfrobbs@gmail.com](mailto:dfrobbs@gmail.com)

Mail: 2826 Birchwood Ave,  
Bellingham, WA 98225

### *remaining one time needs:*

flights, visas,  
passports  
\$8,000

Robbins' Nkhoma  
home restoration  
\$3,000

STRETCH GOAL:  
seminary student  
housing repairs  
\$10,000